



Seattle
Neighborhoods

Placemaking Using City of Seattle Neighborhood Matching Funds

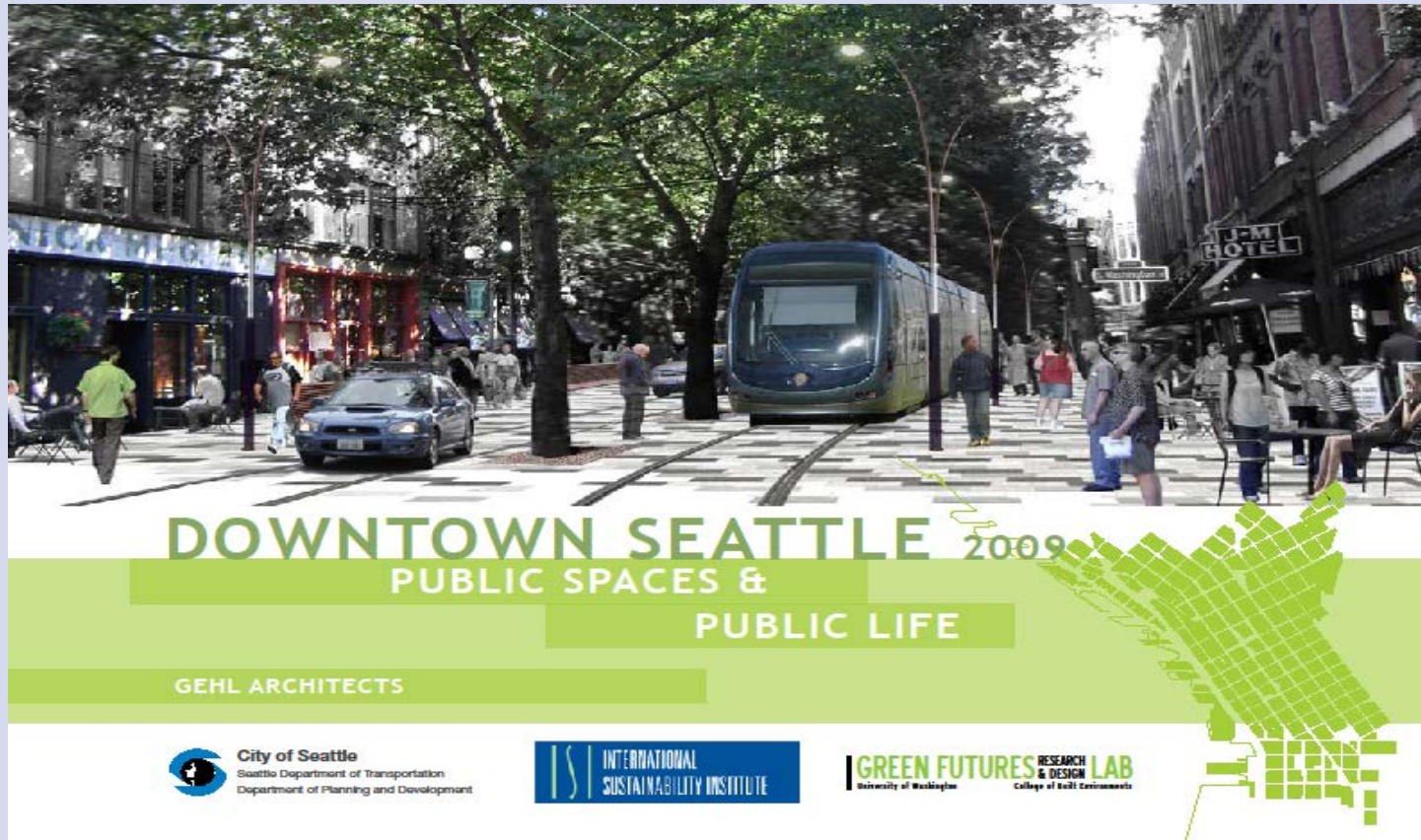
July 22, 2017

Why is Placemaking important?

- It builds community
- It can make use of small, unique, irregular or wide open spaces
- It reinforces the idea that streets, sidewalks, and other public spaces are for the **PUBLIC**

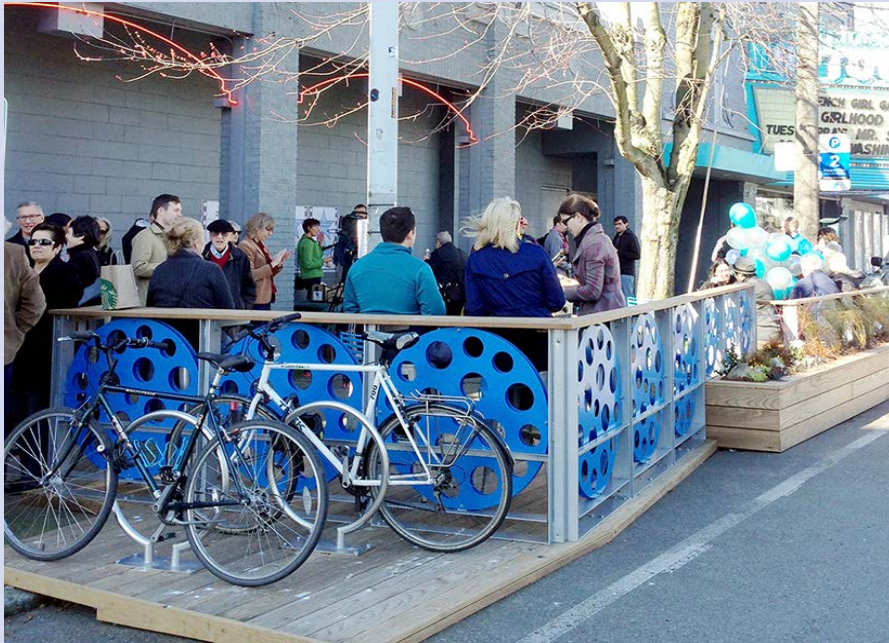


Public Spaces & Public Life Study



Seattle
Neighborhoods

City - Community Partnerships Supporting Café Culture



Seattle
Neighborhoods

City - Community Partnerships for Alley Activation



Seattle
Neighborhoods

Additional Seattle Placemaking Initiatives

- **Parklets**
- **Streeteries**
- **Community Crosswalks**
- **Festival Streets**
- **Adaptive Streets**



Neighborhood Matching Fund



Seattle
Neighborhoods



Neighborhood Matching Fund

- Community-led, City-funded projects
- Community matches City funding
- Any community group can apply
- Public benefit and community-building



NMF Supports Placemaking

Fremont Troll

NMF Award: \$22,400

Community Match: \$27,325



Seattle
Neighborhoods

NMF Supports Placemaking

I-5 Colonnade Open Space

NMF Award: \$24,575

Community Match: \$17,500

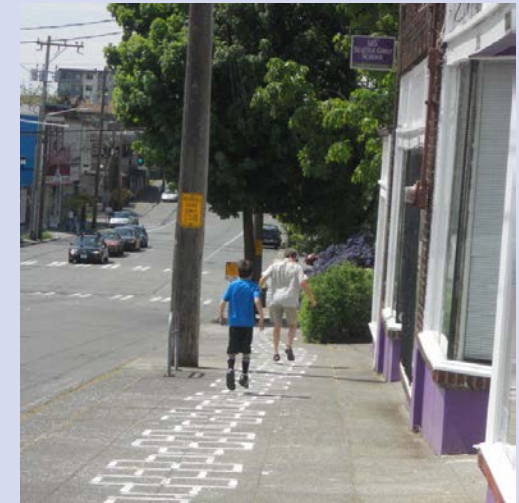


NMF Supports Placemaking

Central District Hopscotch

NMF Award: \$3,180

Community Match: \$3,200



Seattle
Neighborhoods

NMF Supports Placemaking

Base Camp Park(ing) Day

NMF Award: \$590
Community Match: \$4,025



NMF Supports Placemaking

University District Parklet

NMF Grant: \$8,975
Community Match: \$10,891



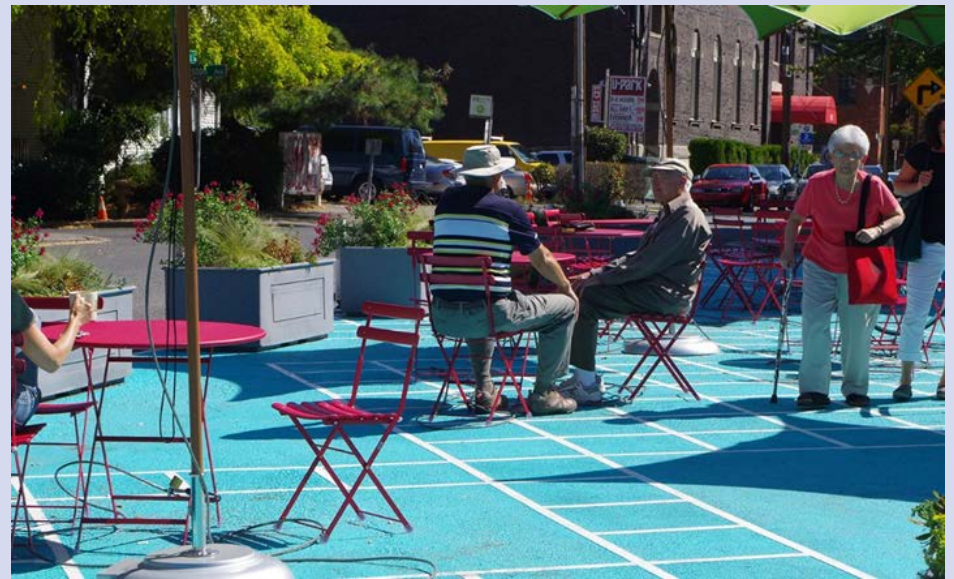
Seattle
Neighborhoods

NMF Supports Placemaking

First Hill Pavement to Park

NMF Award: \$16,000

Community Match: \$10,500



Seattle
Neighborhoods

NMF Supports Placemaking

Chinatown/International District



Seattle
Neighborhoods

NMF Supports Placemaking

White Deer Crossing

NMF Award: \$25,000

Community Match: \$25,000



Seattle
Neighborhoods

NMF Supports Placemaking

Jimi Hendrix Park

NMF Award: \$250,000
Community Match: \$1 Million and counting



Seattle
Neighborhoods

Q & A



Seattle
Neighborhoods